



**JABATAN LAUT MALAYSIA  
IBU PEJABAT LAUT WILAYAH TENGAH  
PETI SURAT 268, JALAN FORSHORE  
42007 PELABUHAN KLANG  
SELANGOR DARUL EHSAN**



Tel : 603-31695100  
Faks : 603-31653540  
Laman Web : www.marine.gov.my

**PEKELILING PELABUHAN NO.08 / 2025  
PORT CIRCULAR NO. 08 / 2025**

DARIPADA / FROM : PENGARAH, JABATAN LAUT MALAYSIA WILAYAH TENGAH  
DIRECTOR, MARINE DEPARTMENT MALAYSIA CENTRAL REGION

KEPADA / TO : SEMUA NAKHODA KAPAL, PELAUT, PEMILIK & AGEN  
PERKAPALAN DAN MASYARAT PERKAPALAN AMNYA  
ALL SHIP MASTERS, MARINERS, SHIP OWNERS & AGENTS  
AND THE GENERAL SHIPPING COMMUNITY

TARIKH / DATE : 26 Februari 2025 / 26<sup>th</sup> February 2024

**PELANJUTAN KERJA-KERJA PEMBINAAN  
MARIN BAGI KERJA PROJEK WESTPORT  
EXPANSION CT10-CT13 KAWASAN  
PELABUHAN BARAT PELABUHAN KLANG**

**EXTENSION FOR MARINE CONSTRUCTION  
WORKS WESTPORTS EXPANSION CT10-CT13  
WITHIN PORT KLANG WATERS AREA  
WESTPORT**

Pekeliling Pelabuhan PCC 27/2024 terdahulu dirujuk. Pelanjutan kerja dijalankan bagi projek pembinaan di Pelabuhan Barat CT10 hingga CT13

Previous Port Circular PCC 27/2024 is referred. Extension period for works to be conducted for Westport Expansion project CT10 to CT13

Tempoh:  
26 Februari 2025 hingga 23 Mei 2025

Duration:  
26<sup>th</sup> February 2025 until 23<sup>rd</sup> May 2025

**Kawasan terlibat:**

- Pelabuhan Barat,
- Pintu Gedung,
- Tapak konsesi lombong pasir Zeemus Specialist Sdn Bhd
- Tapak konsesi lombong pasir Sunrise Oceanic Sdn Bhd
- Rujuk Lampiran 1, 2 & 3

**Involved area:**

- Westport,
- Pintu Gedung,
- Sand Mining Consession Zeemus Specialist Sdn Bhd
- Sand Mining Consession Sunrise Oceanic Sdn Bhd
- Refer Attachment 1, 2 & 3

Rujukan Carta:  
MAL 5259, MAL 5255 & MAL 532

Navigational Chart Reference:  
MAL 5259, MAL 5255 & MAL 532

**Kapal yang terlibat:**

**Vessels involved:**

Nama Kapal	IMO No.	GRT / NRT	PELABUHAN DAFTAR
JIN MAO 12	1089259	398 / 119	FREETOWN
XIN HAI FENG	9485605	17089 / 5126	SHANG HAI

Senarai kapal tertakluk permohonan

Additional vessels involved as applies

Semua vessel adalah dinasahati berlayar dengan dengan kelajuan selamat serta berhati-hati apabila melalui kawasan tersebut.  
Terima kasih.

All vessels are advised to navigate with caution and safe speed in the vicinity.

Thank you.

**NOR HASLINDA BINTI BASHIR**  
b.p Pengarah  
Jabatan Laut Malaysia Wilayah Tengah  
for Director  
Marine Department Malaysia Central Region

Lampiran 1 / Attachment 1

Figure 1-1 : PROJECT BOUNDARY

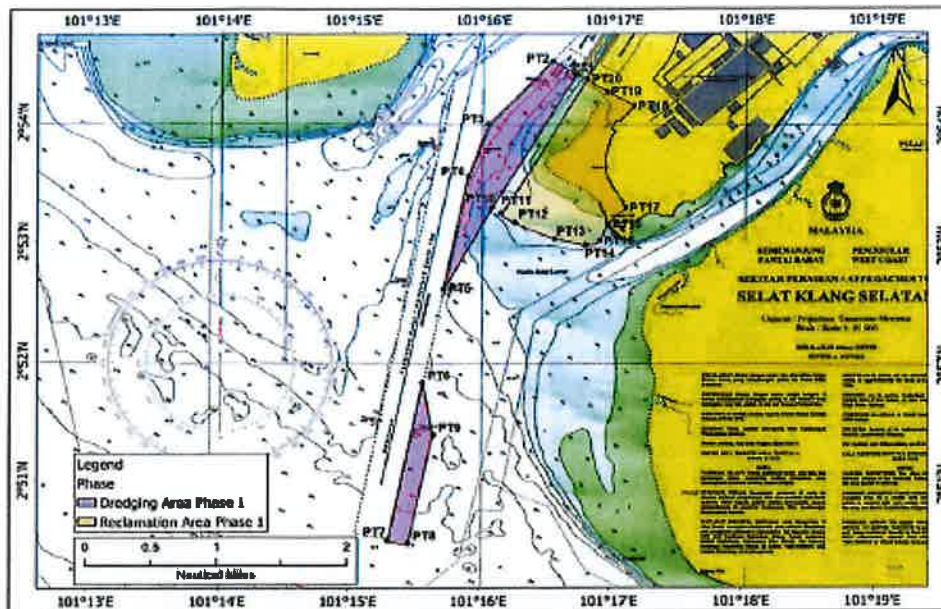


Table 1: Coordinates of Working Boundary for Westport II Expansion Phase 1

Point	Latitude	Longitude
PT1	02° 54.420' N	101° 16.720' E
PT2	02° 54.528' N	101° 16.533' E
PT3	02° 53.998' N	101° 16.050' E
PT4	02° 53.534' N	101° 15.890' E
PT5	02° 52.610' N	101° 15.709' E
PT6	02° 51.843' N	101° 15.558' E
PT7	02° 50.501' N	101° 15.295' E
PT8	02° 50.470' N	101° 15.464' E
PT9	02° 51.400' N	101° 15.636' E
PT10	02° 53.348' N	101° 16.104' E
PT11	02° 53.244' N	101° 16.154' E
PT12	02° 53.228' N	101° 16.169' E
PT13	02° 53.133' N	101° 16.337' E
PT14	02° 53.053' N	101° 16.542' E
PT15	02° 53.022' N	101° 16.910' E
PT16	02° 53.162' N	101° 16.964' E
PT17	00° 10.528' N	101° 17.130' E
PT18	02° 54.163' N	101° 17.165' E
PT19	02° 54.265' N	101° 16.987' E
PT20	02° 54.372' N	101° 16.801' E

Lampiran 2 / Attachment 2

**DUMPING GROUND**

The location of the approved dumping ground for dredged material is shown in the figure below and its coordinates.

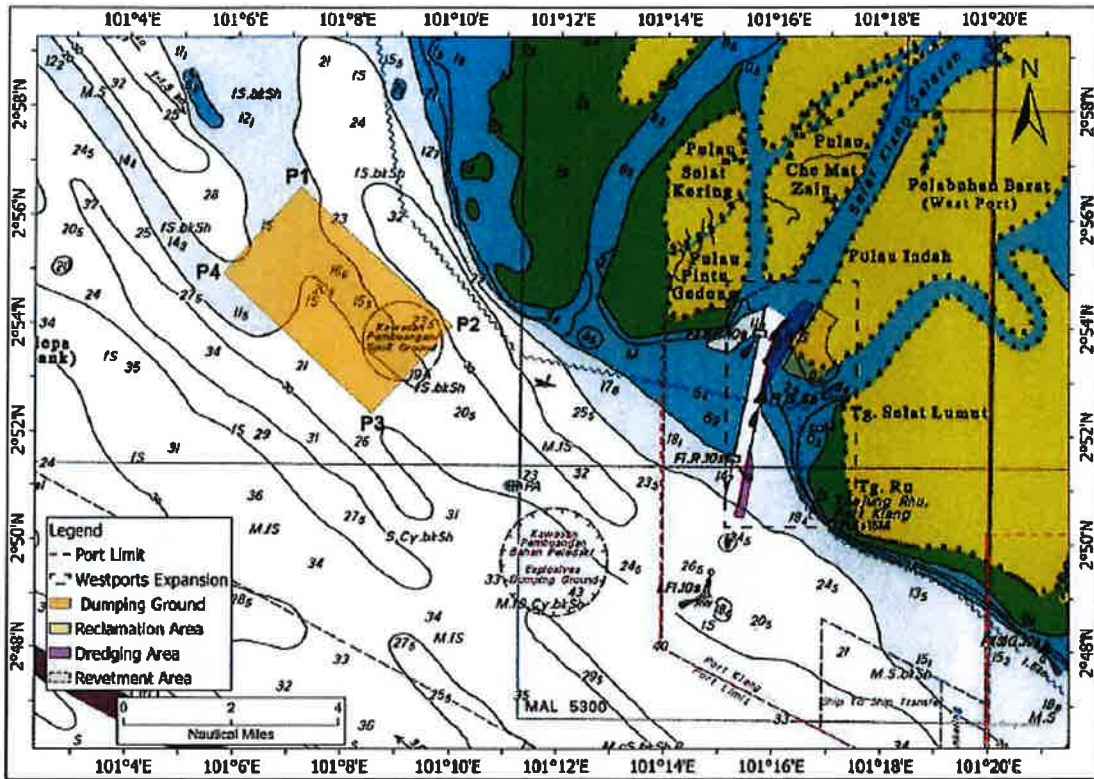


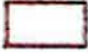
Figure 56: Location of Approved Dumping Ground


Table 10: Coordinates of the Approved Dumping Ground

Coordinate of the Approved Dumping Ground		
Point	Coordinate	
	Latitude	Longitude
P1	02° 56.533'N	101° 07.183'E
P2	02° 53.983'N	101° 10.000'E
P3	02° 52.366'N	101° 08.533'E
P4	02° 54.933'N	101° 05.750'E



Lampiran 3 Kawasan Melombong Pasir / Attachment 3 – Sand Mining Area

<b>Senarai Koordinat Kawasan Permohonan Melombong Pasir Dasar Laut oleh Syarikat Zeemus Specialist Sdn. Bhd.</b>		
<b>Titik</b>	<b>Latitud (U)</b>	<b>Longitud (T)</b>
1	02° 47' 36"	101° 10' 37"
2	02° 48' 31"	101° 11' 06"
3	02° 48' 00"	101° 13' 59"
4	02° 43' 43"	101° 21' 42"
5	02° 42' 36"	101° 21' 52"
6	02° 44' 41"	101° 17' 44"
7	02° 49' 37"	101° 17' 16"
 <b>Luas Kawasan</b> <b>6,571 Hektar / 65.71 Km Persegi</b>		

<b>Senarai Koordinat Kawasan Permohonan Pelanjutan Melombong Pasir Dasar Laut oleh Syarikat Sunrise Oceanic Sdn. Bhd.</b>		
<b>Titik</b>	<b>Koordinat (WGS84)</b>	
	<b>Latitud (U)</b>	<b>Longitud (T)</b>
A	2° 49' 47.0"	101° 07' 27.9"
B	2° 50' 46.2"	101° 08' 07.7"
C	2° 49' 24.7"	101° 10' 06.2"
D	2° 48' 29.4"	101° 09' 31.3"
 <b>Luas Kawasan A,B,C dan D</b> <b>942.9 Hektar / 9.429 Km Persegi</b>		