



**NOTA MAKLUMAT DAN PANDUAN MARIN**  
MARINE INFORMATION AND GUIDANCE NOTE

NMPM 48/2003

**JABATAN LAUT SEMENANJUNG MALAYSIA**

MARINE DEPARTMENT PENINSULAR MALAYSIA

Ibu Pejabat Laut Semenanjung Malaysia, Peti Surat 12, 42007 Pelabuhan Klang.

Tel: 03-3346 7777 Fax: 03-3168 5289, 3167 2882 E-mail:

[kpgr@marine.gov.my](mailto:kpgr@marine.gov.my)

webpage: <http://www.marine.gov.my>

---

**PERAKUAN KEKOMPETENAN SEBAGAI "PEGAWAI YANG MENJAGA AWASAN PELAYARAN BAGI 500GT ATAU LEBIH PELAYARAN DAGANG PESISIRAN PANTAI" DAN "PEGAWAI MENJAGA AWASAN KEJURUTERAAN 750kW ATAU LEBIH PELAYARAN DAGANG PESISIRAN PANTAI"**

*CERTIFICATE OF COMPETENCY AS "OFFICER IN CHARGE OF A NAVIGATIONAL WATCH OF 500GT OR MORE IN NEAR COASTAL TRADE VOYAGE" AND "OFFICER IN CHARGE OF AN ENGINEERING WATCH OF 750 kW OR MORE IN NEAR COASTAL TRADE VOYAGE"*

---

Pemakluman kepada pelaut-pelaut, majikan pelaut serta mereka-mereka yang terlibat di dalam latihan pelaut.

*Information to seafarers, seafarers' employers, and those involved in training of seafarers.*

---

- |   |  |
|---|--|
| <p>1. Jabatan Laut, di bawah peruntukan Kaedah-Kaedah Perkapalan Saudagar (Latihan dan Perakuan) 1999, telah memperkenalkan had yang baru kepada beberapa perakuan kekompetenan, seperti berikut-</p> <p>(a) Pegawai yang menjaga Awasan Pelayaran bagi 500GT atau lebih <b>Pelayaran Dagang Pesisiran Pantai</b>; dan</p> <p>(b) Pegawai yang menjaga Awasan Kejuruteraan 750kW atau lebih <b>Pelayaran Dagang Pesisiran Pantai</b>.</p> | <p>1. <i>The Marine Department has, under the provision of the Merchant Shipping (Training and Certification) Rules 1999, introduced a new limitation to some existing certificates of competency, as follows-</i></p> <p>(a) <i>Officer in Charge of a Navigational Watch of 500GT or more in <b>Near Coastal Trade Voyage</b>; and</i></p> <p>(b) <i>Officer in Charge of an Engineering Watch of 750kW or more in <b>Near Coastal Trade Voyage</b>.</i></p> |
| <p>2. Butiran lanjut berhubung pengeluaran perakuan-perakuan tersebut diterangkan di Lampiran 1.</p>  | <p>2. <i>The details in respect of the issuance of these certificates are elaborated in <u>Appendix 1</u>.</i></p>   |
| <p>3. Pelaut-pelaut adalah</p>  | <p>3. <i>Seafarers are advised to make enquiries at the appropriate</i></p>  |

dinasihatkan untuk berhubung terus dengan institusi-institusi latihan tempatan yang telah diluluskan bagi mendapatkan butiran lanjut berhubung kursus yang diperlukan bagi mendapatkan perakuan yang dimaksudkan.

4. Maklumat tambahan berhubung peningkatan kemajuan kerjaya bagi pemegang-pemegang Perakuan Kekompetenan sebagai "Pegawai yang Menjaga Awasan Pelayaran bagi 500GT atau lebih Pelayaran Dagang Pesisiran Pantai" dan "Pegawai yang Menjaga Awasan Kejuruteraan 750kW atau Lebih Pelayaran Dagang Pesisiran Pantai" disertakan di Lampiran 2. Jadual rujukan bagi menukarkan sijil-sijil kekompetenan yang diperolehi sebelum Kaedah-Kaedah Perkapalan Saudagar (Latihan dan Perakuan) 1999 turut disertakan di Lampiran 3.

5. Notis ini hendaklah berkuatkuasa dengan serta merta.

*local training institutions, that have been approved for details on the course requirements prior to obtaining the certificates.*

4. *Additional information on the upward career path for holders of the Certificates of Competency as "Officer in Charge of a Navigational Watch of 500GT or more in Near Coastal Trade Voyage" and "Officer in Charge of an Engineering Watch of 750kW or more in Near Coastal Trade Voyage" is provided in [Appendix 2](#). The reference table for converting certificates of competency obtained prior to the Merchant Shipping (Training and Certification) Rules, 1999 is also provided in [Appendix 3](#).*

5. *This notice comes into force with immediate effect.*

Ketua Pengarah Laut / *Director of Marine*  
Tarikh /*Date*: 17 November 2003

**Syarat-syarat bagi mendapatkan Perakuan Kekompetenan Sebagai "Pegawai yang Menjaga Awasan Pelayaran bagi 500 GT atau lebih Pelayaran Dagang Pesisiran Pantai" dan "Pegawai yang Menjaga Awasan Kejuruteraan 750kW atau Lebih Pelayaran Dagang Pesisiran Pantai"**

*Conditions for obtaining the certificate of competency as "Officer in Charge of a Navigational Watch of 500 GT or more in Near Coastal Trade Voyage" and "Officer in Charge of an Engineering Watch of 750kW or more in Near Coastal Trade Voyage".*

**Dek**

**Deck**

- |  |  |
|--|--|
| <p>1. Pelaut-pelaut di dalam bahagian dek, kini boleh memohon untuk gred perakuan kekompetenan sebagai <b>"Pegawai yang Menjaga Awasan Pelayaran bagi 500 GT atau lebih Pelayaran Dagang Pesisiran Pantai"</b>. Perakuan ini bertujuan untuk memudahkan pelaut bagi meningkatkan kekompetenan ke tahap sama ada "kapal di antara 500 dan 3,000 GT dalam Pelayaran Dagang Pesisiran Pantai" atau "Kapal 3,000 GT atau Lebih dalam Pelayaran Dagang Pesisiran Pantai".</p>                             | <p>1. Seafarers in the deck department, may now apply for the certificate of competency as <b>"Officer in Charge of a Navigational Watch of 500 GT or more in Near Coastal Trade Voyage"</b>. This certificate intends to facilitate seafarers to upgrade to the next level of competency either for "ships of between 500 and 3,000 GT in near coastal trade voyage" or for "ships of 3,000 GT or more in near coastal trade voyage".</p> |
| <p>2. Syarat-syarat dan kehendak-kehendak bagi mendapatkan perakuan kekompetenan sebagai Pegawai yang Menjaga Awasan Pelayaran 500 GT atau Lebih Dalam Pelayaran Dagang Pesisiran Pantai adalah seperti berikut-</p> <p>(a) Sekurang-kurangnya berumur 18 tahun;</p> <p>(b) Mempunyai perkhidmatan di laut yang diluluskan-</p> <p>(i) Tidak kurang dari 1 tahun sebagai sebagian dari program latihan yang diluluskan, termasuk latihan di atas kapal seperti yang ditentukan oleh Pengarah dan</p> | <p>2. The conditions and requirements to obtain the certificate of competency as Officer in Charge of a Navigation Watch of 500 GT or more in Near Coastal Trade Voyage are as follows-</p> <p>(a) At least 18 years of age;</p> <p>(b) Have an approved sea-going service of-</p> <p>(i) Not less than 1 year as part of an approved training programme which include on-board training as specified by the Director and is</p>           |

- didokumenkan di dalam buku rekod latihan yang diluluskan; atau
- documented in an approved training record book; or*
- (ii) Sebaliknya mempunyai perkhidmatan laut yang diluluskan tidak kurang dari 3 tahun;
- (ii) Otherwise has an approved sea going service of not less than 3 years;*
- (c) Telah menjalankan, semasa dalam perkhidmatan laut yang diperlukan, tugas-tugas pengawasan anjung di bawah penyeliaan nakhoda atau seorang pegawai yang berkeelayakan selama tempoh tidak kurang dari 6 bulan;
- (c) Have performed, during the required sea going service, bridge watchkeeping duties under the supervision of a master or a qualified officer for a period of not less than 6 months;*
- (d) Memenuhi kehendak-kehendak terpakai di bawah kaedah 26, mengikut mana yang sesuai, bagi menjalankan mengikut Peraturan-Peraturan Radio;
- (d) Meets the applicable requirements of rule 26 as appropriate, for performing designated radio duties in accordance with the Radio Regulations;*
- (e) Telah menamatkan pendidikan dan latihan yang diluluskan dan memenuhi standard kekompetenan yang ditetapkan oleh Ketua Pengarah; dan
- (e) Have completed the approved education and training and met the standard of competence as specified by the Director General; and*
- (f) Telah menghadiri kursus-kursus modular seperti berikut-
- (f) Have attended the following modular courses-*
- (i) Latihan Asas Keselamatan;
- (i) Basic Safety Training;*
- (ii) Kursus Lanjutan Melawan Kebakaran;
- (ii) Advanced Fire Fighting;*
- (iii) Pemerhatian Radar;
- (iii) Radar Observer;*
- (iv) Alat-Alat Bantuan Pelayaran Elektronik (Pelaksanaan);
- (iv) Electronic Navigational Aids (Operational);*

- |   |  |
|---|--|
| (v) Kecekapan dalam Lancang dan Bot Penyelamat; | (v) <i>Efficiency in Survival Craft and Rescue Boat;</i> |
| (vi) Pertolongan Cemas Kesihatan; dan           | (vi) <i>Medical First Aid; and</i>                       |
| (vii) Perakuan am operator (GMDSS).             | (vii) <i>General operator certificate (GMDSS).</i>       |

**Enjin**

1. Pelaut-pelaut di dalam jurusan kejuruteraan, kini boleh memohon untuk mendapatkan perakuan kekompetenan sebagai "Pegawai yang Menjaga Awasan Kejuruteraan 750kW atau Lebih Pelayaran Dagang Pesisiran Pantai". Perakuan ini bertujuan memudahkan pelaut bagi meningkatkan kekompetenan ke tahap sama ada "Kapal di antara 750kW dan 3,000kW dalam Pelayaran Dagang Pesisiran Pantai" atau "Kapal 3,000kW atau Lebih dalam Pelayaran Dagang Pesisiran Pantai".
2. Syarat-syarat dan kehendak-kehendak bagi mendapatkan perakuan kekompetenan sebagai Pegawai yang Menjaga Awasan Kejuruteraan 750kW atau Lebih Pelayaran Dagang Pesisiran Pantai adalah seperti berikut-
  - (a) Hendaklah memegang Perakuan sebagai Pegawai Jurutera Kurang dari 750kW Pelayaran Domestik dan Pelayaran Dagang Pesisiran Pantai;
  - (b) Telah mempunyai perkhidmatan laut tidak kurang dari 18 bulan sebagai penolong jurutera atau pegawai jurutera;
  - (c) Telah menamatkan pendidikan dan latihan

**Engineering**

1. *Seafarers in the engineering department, may now apply for the certificate of competency as "Officer in Charge of an Engineering Watch of 750kW or more in Near Coastal Trade Voyage". This certificate intends to facilitate seafarers to upgrade to the next level of competency either for "Ships with between 750kW and 3,000kW in Near Coastal Trade Voyage" or for "Ships of 3,000kW or More in Near Coastal Trade Voyage" .*
2. *The conditions and requirements to obtain the certificate of competency as Officer in Charge of an Engineering Watch of 750kW or more Near Coastal Trade Voyage are as follows-*
  - (a) *Must hold a Certificate as an Engineer Officer of Less than 750kW Domestic and Near Coastal Trade Voyage;*
  - (b) *Have completed not less than 18 months of sea-going service as an assistant engineer or engineer officer;*
  - (c) *Have completed the*

yang diluluskan dan memenuhi standard kekompetenan yang ditetapkan oleh Ketua Pengarah; dan

(d) Telah menghadiri kursus-kursus modular seperti berikut-

(i) Latihan Asas Keselamatan;

(ii) Kursus Lanjutan Melawan Kebakaran;

(iii) Kecekapan dalam Lancang dan Bot Penyelamat; dan

(iv) Pertolongan Cemas Kesihatan.

*approved education and training and met the standard of competence as specified by the Director General; and*

*(d) Have attended the following modular courses-*

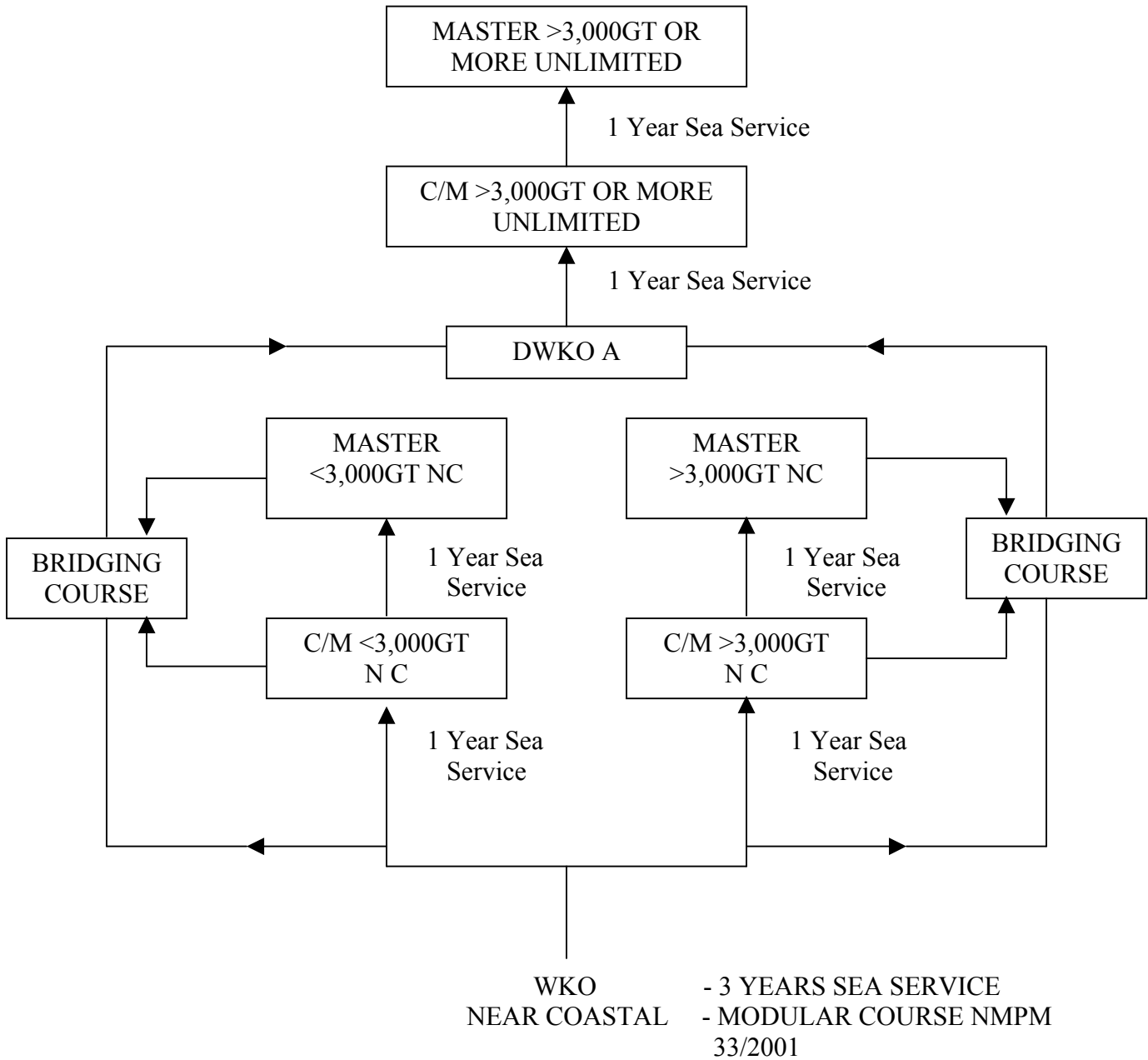
*(i) Basic Safety Training;*

*(ii) Advanced Fire Fighting;*

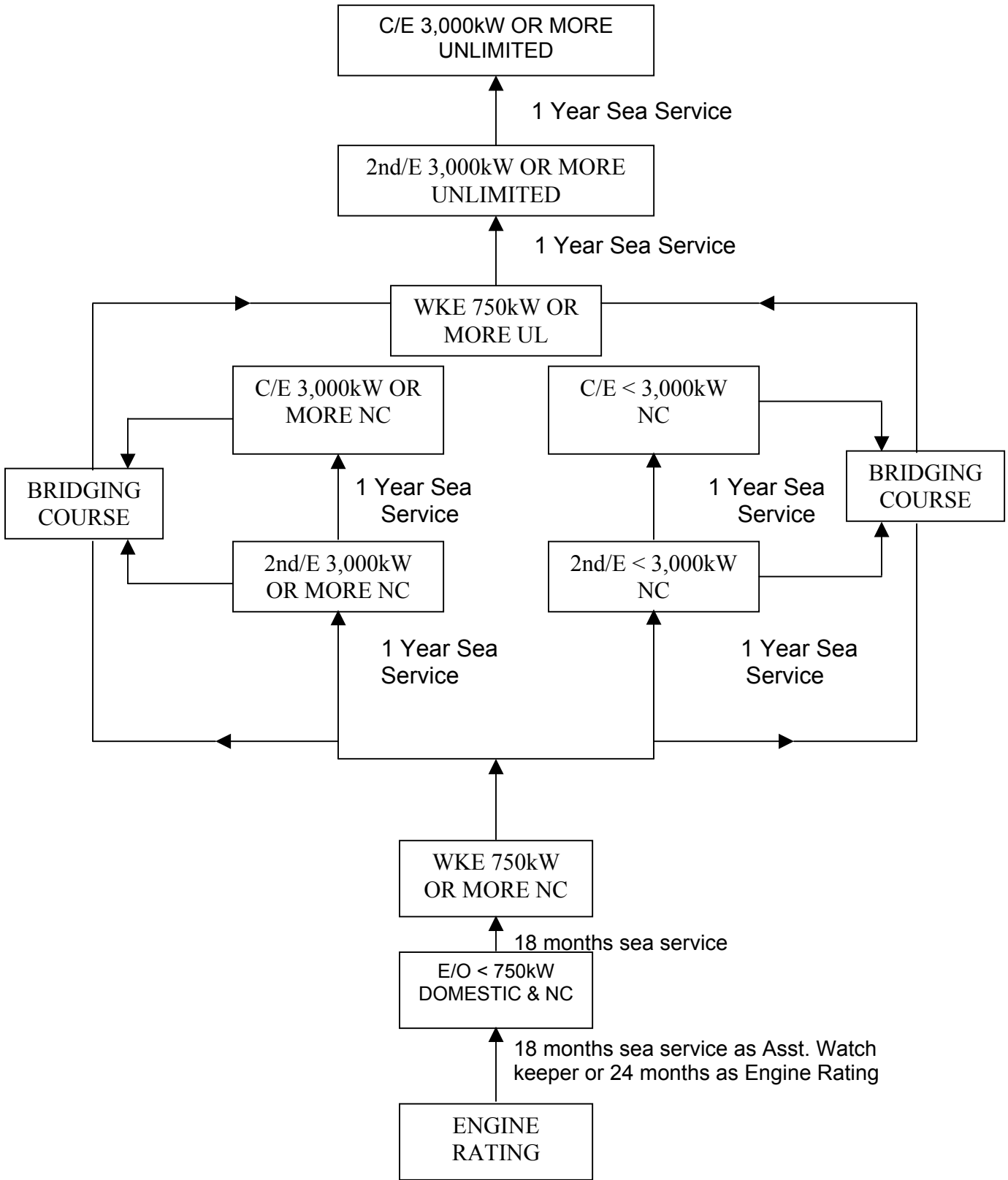
*(iii) Efficiency in Survival Craft and Rescue Boat; and*

*(iv) Medical First Aid.*

**CAREER PATH FOR OFFICER IN CHARGE OF NAVIGATIONAL WATCH  
500GT OR MORE NEAR COASTAL TRADE VOYAGE**



**CAREER PATH FOR OFFICER IN CHARGE OF ENGINEERING WATCH  
500kW OR MORE ON NEAR COASTAL TRADE VOYAGE**





**CONVERSION OF PREVIOUS CERTIFICATES OF COMPETENCY  
TO STCW 95 CERTIFICATES OF COMPETENCY**

No	Previous STCW 78 COC	STCW 95 Certificates	Capacity and Limitation	Additional Courses to be attended
1	<ul style="list-style-type: none"> <li>▪ Deck Officer Class 1</li> <li>▪ Master Foreign Going</li> </ul>	Master of 3,000 GT or more Unlimited Voyages	<ul style="list-style-type: none"> <li>• Master UL</li> <li>• Chief Mate UL</li> <li>• WKO UL</li> </ul>	As per NMPM 33/2001
2	<ul style="list-style-type: none"> <li>▪ Deck Officer Class 2</li> <li>▪ Chief Mate Foreign Going</li> </ul>	Chief Mate of 3,000 GT or more Unlimited Voyages	<ul style="list-style-type: none"> <li>• Chief Mate UL</li> <li>• WKO UL</li> <li>• Master &gt; 3000 GT NC -after 1 year as CM</li> </ul>	As per NMPM 33/2001
3	<ul style="list-style-type: none"> <li>▪ Deck Officer Class 4 (M)</li> <li>▪ Master Home Trade</li> </ul>	Master of 3,000 GT or more Near- coastal trade voyages	<ul style="list-style-type: none"> <li>• Master &gt; 3000 GT NC</li> <li>• Chief Mate &gt; 3000 GT NC</li> <li>• WKO NC</li> </ul>	As per NMPM 33/2001
4	<ul style="list-style-type: none"> <li>▪ Deck Officer Class 4</li> <li>▪ Mate Home Trade</li> </ul>	Chief Mate of 3,000 GT or more Near-coastal trade voyages	<ul style="list-style-type: none"> <li>• Chief Mate &gt; 3000 GT NC</li> <li>• WKO NC</li> <li>• Master &lt; 3000 GT NC – after 1 year as CM</li> </ul>	As per NMPM 33/2001
5	<ul style="list-style-type: none"> <li>▪ Deck Officer Class 5 (M)</li> <li>▪ Master Local Trade</li> </ul>	Master of between 500 and 3,000 GT Near-coastal trade voyages	<ul style="list-style-type: none"> <li>• Master &lt; 3000 GT NC</li> <li>• Chief Mate &lt; 3000 GT NC</li> <li>• WKO NC</li> </ul>	As per NMPM 33/2001

No	Previous STCW 78 COC	STCW 95 Certificates	Capacity and Limitation	Additional Courses to be attended
6	<ul style="list-style-type: none"> <li>▪ Deck Officer Class 5</li> <li>▪ Mate Local Trade</li> </ul>	Chief Mate of between 500 and 3,000 GT Near-coastal trade voyages	<ul style="list-style-type: none"> <li>• Chief Mate &lt; 3000 GT NC</li> <li>• WKO NC</li> <li>• Master &lt; 500 GT NC - after 1 year as CM</li> </ul>	As per NMPM 33/2001
7	<ul style="list-style-type: none"> <li>▪ Deck Officer Class 3</li> <li>▪ 2<sup>nd</sup>. Mate Foreign Going</li> <li>▪ 3<sup>rd</sup>. Mate Foreign Going</li> </ul>	Officer in charge of navigational watch 500 GT or more Unlimited	<ul style="list-style-type: none"> <li>• WKO Unlimited</li> <li>• Mate &lt; 500 GT NC</li> <li>• Master &lt; 500 GT NC - after 1 year as WKO UL</li> </ul>	As per NMPM 33/2001
8	<ul style="list-style-type: none"> <li>▪ NIL</li> </ul>	Officer in charge of navigational watch 500 GT or more Near-coastal	<ul style="list-style-type: none"> <li>• WKO NC</li> </ul>	As per requirement of WKO Unlimited
9	<ul style="list-style-type: none"> <li>▪ NIL</li> </ul>	Master of less than 500 GT Near-coastal trade voyages	<ul style="list-style-type: none"> <li>• Master &lt; 500 GT NC</li> <li>• Mate &lt; 500 GT NC</li> </ul>	As per NMPM 36/2002
10	<ul style="list-style-type: none"> <li>▪ NIL</li> </ul>	Officer in charge of navigational watch of less than 500 GT Near-coastal trade voyages	<ul style="list-style-type: none"> <li>• Mate &lt; 500 GT NC</li> <li>• Master &lt; 500 GT Domestic Voyages – after 1 year as Mate</li> </ul>	As per NMPM 36/2002
11	<ul style="list-style-type: none"> <li>▪ Deck Officer Class 6(M)</li> <li>▪ Helmsman</li> </ul>	Master of less than 500 GT Domestic Voyages	<ul style="list-style-type: none"> <li>• Master &lt; 500 GT Domestic Voyages</li> <li>• Mate &lt; 500 GT Domestic Voyages</li> </ul>	As per NMPM 33/2001
12	<ul style="list-style-type: none"> <li>▪ Deck Officer Class 6</li> <li>▪ Helmsman</li> </ul>	Mate of less than 500 GT Domestic Voyages	<ul style="list-style-type: none"> <li>• Mate &lt; 500 GT Domestic Voyages</li> </ul>	As per NMPM 33/2001

WKO : Watchkeeping Officer

UL : Unlimited

NC : Near Coastal

CM : Chief Mate

NO	Previous STCW 78 COC	STCW 95 Certificates	Capacity and Limitation	Additional course to be attended
1.	<ul style="list-style-type: none"> <li>▪ Marine Engineer Officer Class 1</li> <li>▪ First Class Engineer</li> </ul>	<b>Chief Engineer Officer</b> of 3000 KW or more Unlimited (III/2)	<ul style="list-style-type: none"> <li>▪ Chief Engineer UL</li> <li>▪ Second Engineer UL</li> <li>▪ WKE UL</li> </ul>	As per NMPM 33/2001
2.	<ul style="list-style-type: none"> <li>▪ Marine Engineer Officer Class 2</li> <li>▪ Second Class Engineer</li> </ul>	<b>Second Engineer Officer</b> of 3000 KW or more Unlimited (III/2)	<ul style="list-style-type: none"> <li>▪ Chief Engineer &gt; 3000 kW NC</li> <li>▪ Second Engineer UL</li> <li>▪ WKE UL</li> </ul>	As per NMPM 33/2001
3.	Nil	<b>Chief Engineer Officer</b> of 3000 KW or more Near-coastal (III/2)	<ul style="list-style-type: none"> <li>▪ Chief Engineer &gt; 3000 kW NC</li> <li>▪ Second Engineer &gt;3000 kW NC</li> <li>▪ WKE UL</li> </ul>	As per NMPM 33/2001
4.	<ul style="list-style-type: none"> <li>▪ Marine Engineer Officer Class 3</li> <li>▪ First Class Engine Driver</li> </ul>	<b>Second Engineer Officer</b> of 3000 KW or more Near-coastal (III/2)	<ul style="list-style-type: none"> <li>▪ Chief Engineer &lt; 3000 kW NC</li> <li>▪ Second Engineer &gt; 3000 kW NC</li> <li>▪ WKE UL</li> </ul>	As per NMPM 33/2001
5.	<ul style="list-style-type: none"> <li>▪ Marine Engineer Officer Class 5</li> <li>▪ Second Class Engine Driver</li> </ul>	<b>Second Engineer Officer</b> of 3000 KW or more Near-coastal (III/2)	<ul style="list-style-type: none"> <li>▪ Second Engineer &gt; 3000 kW NC</li> <li>▪ WKE UL</li> </ul>	As per NMPM 33/2001
6.	Nil	<b>Chief Engineer Officer</b> of less than 3000 KW Near-coastal (III/3)	<ul style="list-style-type: none"> <li>▪ Chief Engineer &lt; 3000 kW NC</li> <li>▪ Second Engineer &lt; 3000 kW NC</li> <li>▪ WKE UL / WKE UL</li> </ul>	As per NMPM 33/2001
7.	<ul style="list-style-type: none"> <li>▪ Marine Engineer Officer Class 4</li> </ul>	<b>Second Engineer Officer</b> of less than 3000 KW Near-coastal (III/3)	<ul style="list-style-type: none"> <li>▪ Second Engineer &lt; 3000 kW NC</li> <li>▪ WKE UL</li> </ul>	As per NMPM 33/2001
8.	Nil	<b>Officer in Charge of Engineering Watch (III/1)</b>	<ul style="list-style-type: none"> <li>▪ WKE UL</li> </ul>	As per NMPM 33/2001
9.	<ul style="list-style-type: none"> <li>▪ Marine Engineer Officer Class 6</li> <li>▪ Third Class Engine Driver.</li> </ul>	<b>Officer in Charge of Engineering Watch (III/1)</b>	<ul style="list-style-type: none"> <li>• WKE of 750 kW or more NC</li> </ul>	As per requirement of WKE Unlimited
10.	Nil	<b>Engineer officer</b> of less than 750 kW Domestic & NC	<ul style="list-style-type: none"> <li>• Engineer officer &lt; 750 kW Domestic &amp; NC</li> </ul>	As per NMPM 33/2001

WKE : Watchkeeping Engineer

UL : Unlimited

NC : Near-coastal